

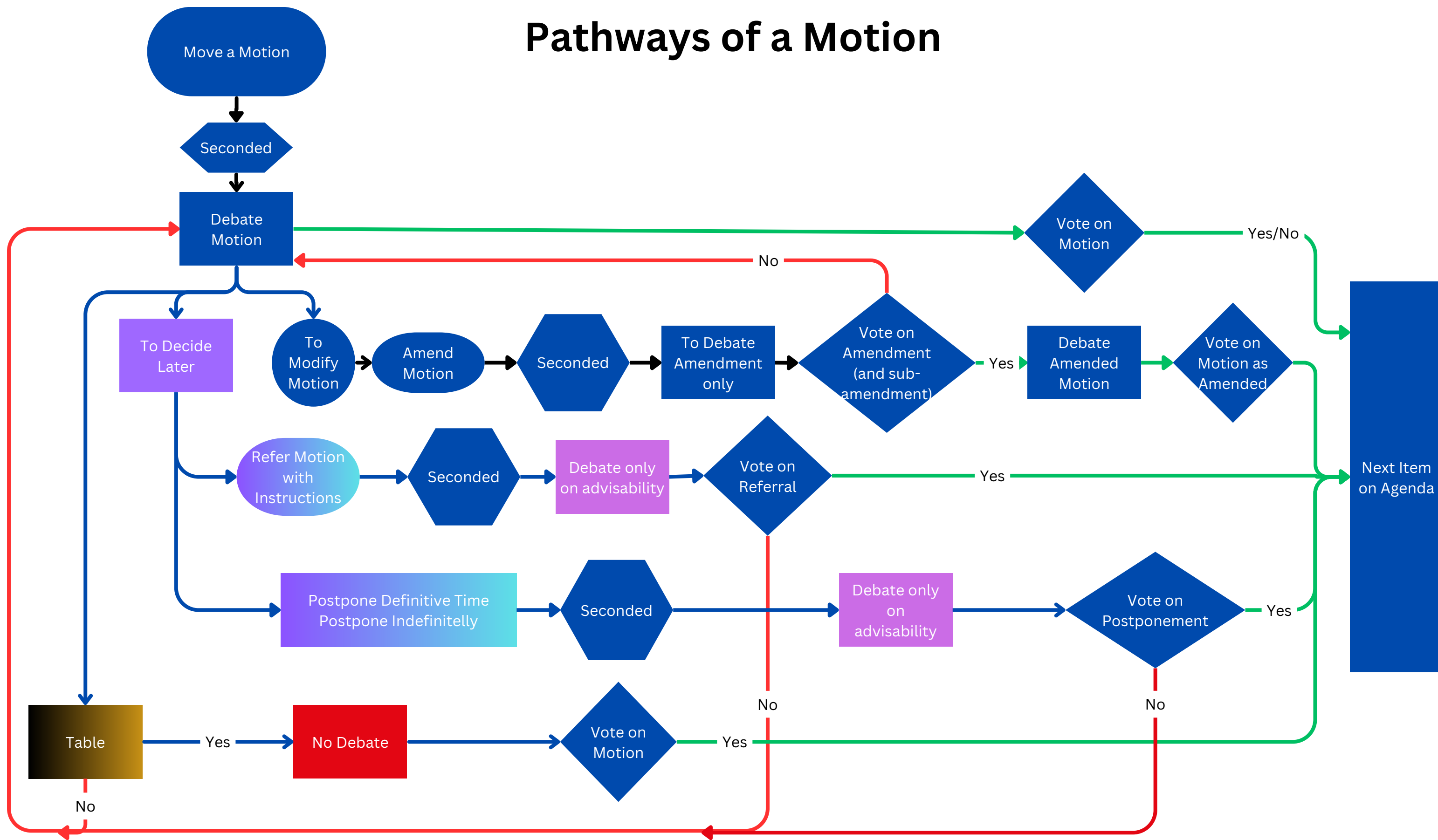
Pathways of a Motion



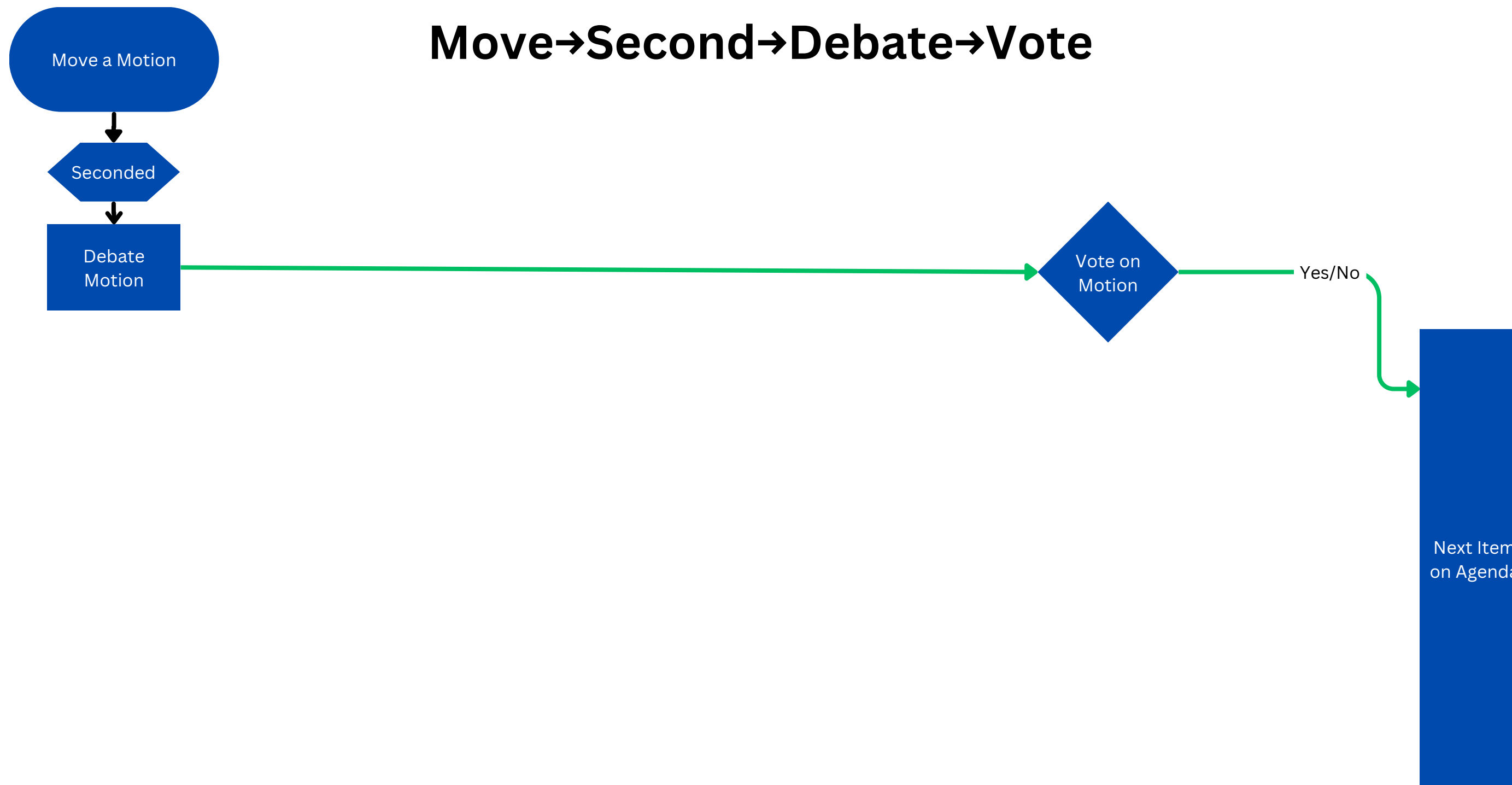
Origin of a Resolution (aka Motion)

A resolution submitted to the Union of National Employees by an executive officer of a local or six members in good standing will have the appropriately affixed signatures. If the submitting body is a local, the proof that the resolution was approved by the local at a general meeting is required. Whether the submitting body is a local or six members in good standing the name and telephone number of the contact person who can provide clarification will be provided. A resolution will not deal with more than one subject, will refer to the direction(s) proposed and should not exceed 150 words.

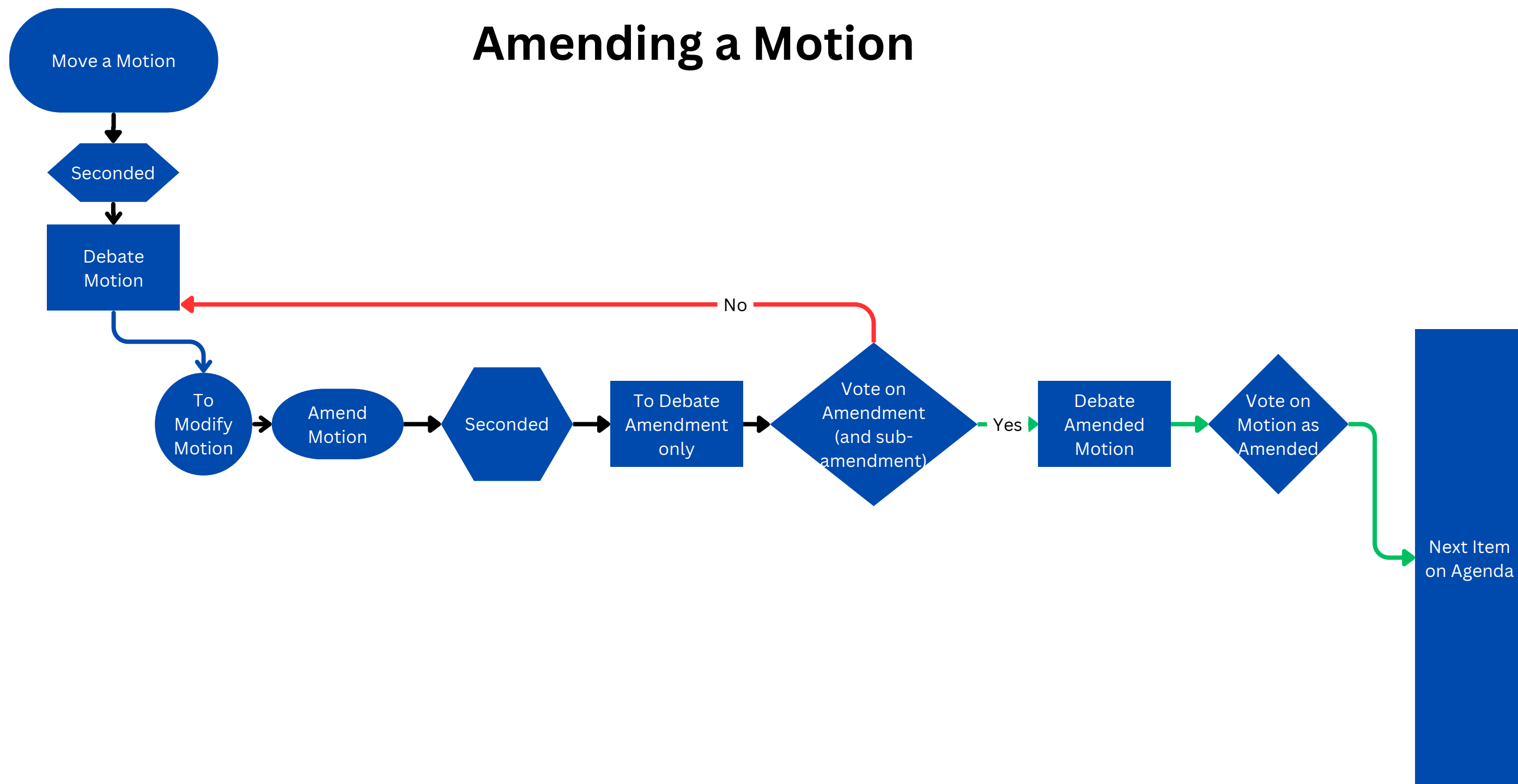
Pathways of a Motion



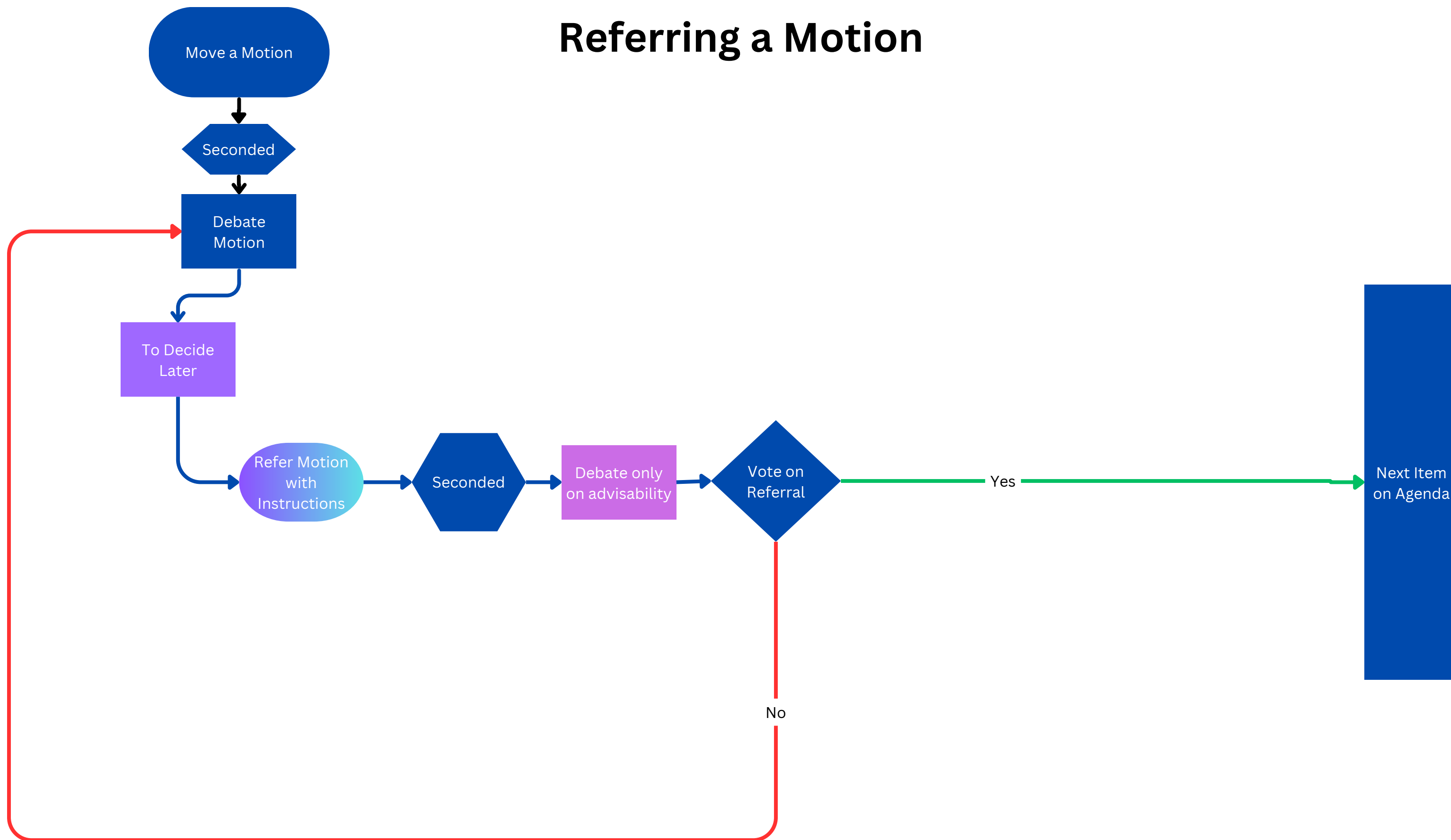
Move→Second→Debate→Vote



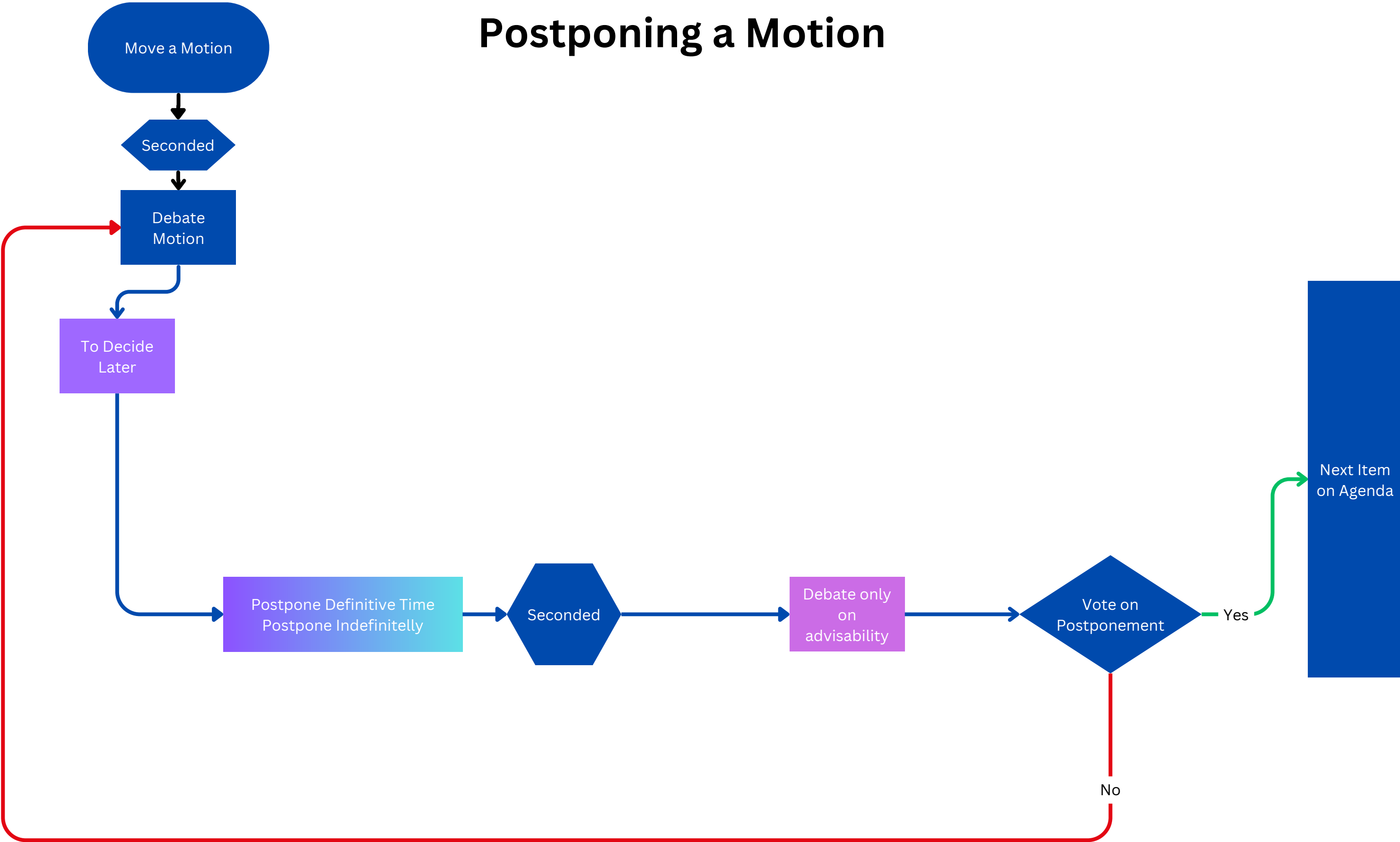
Amending a Motion



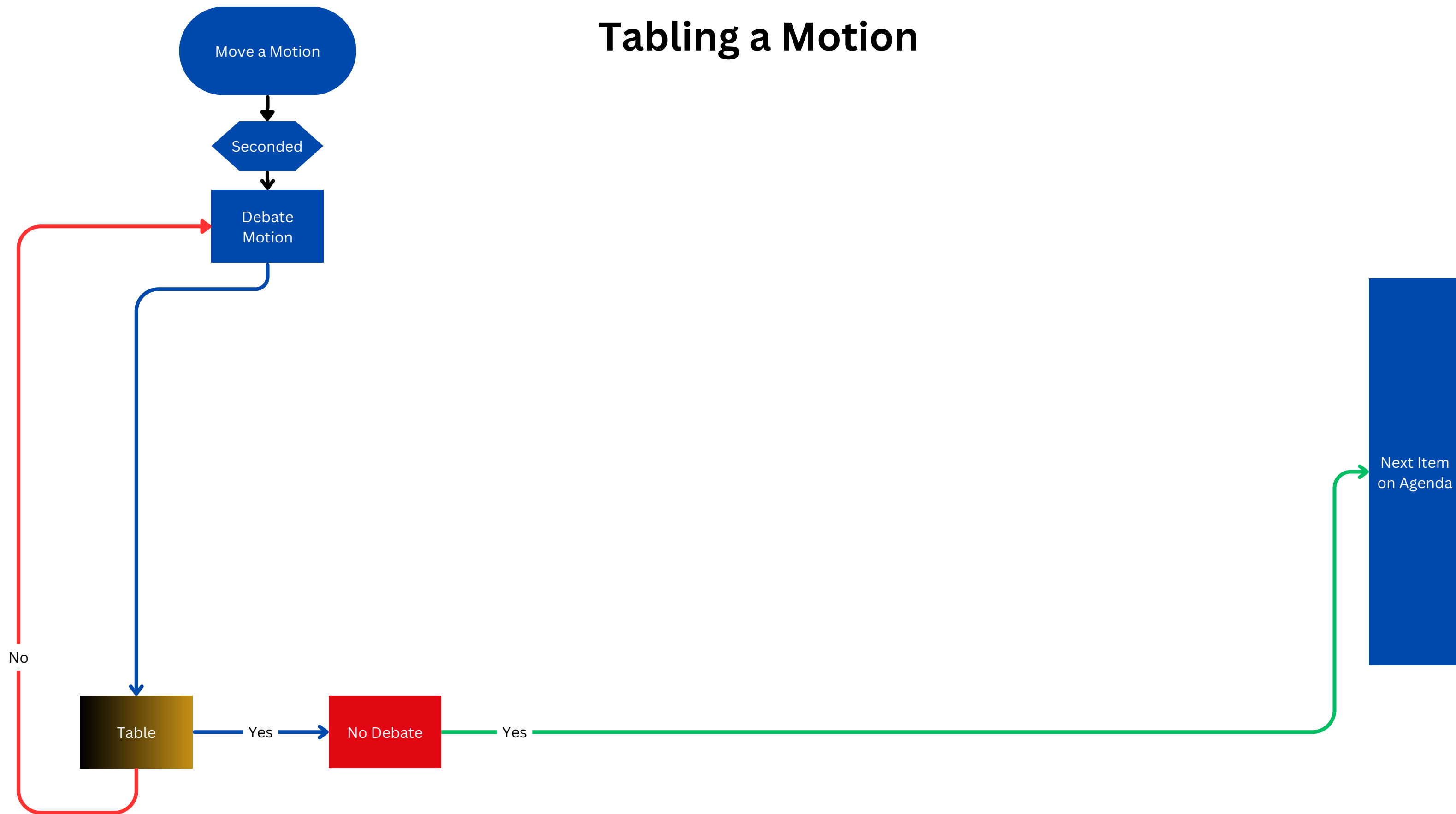
Referring a Motion



Postponing a Motion



Tabling a Motion



Pathways of a Motion

